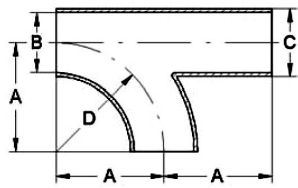


Fittings for welding DIN 11852

Art.No EUR Art.No EUR

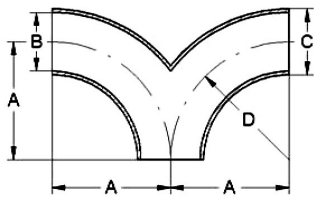
T-bend Zoll



DN	A	B	C	D	AISI304		AISI316L-1.4404	
1"	26,5	22,9	25,4	27,5	561303	96,70	561403	141,70
1,5"	44	35,1	38,1	45	561304	104,10	561404	155,90
2"	66,5	47,8	50,8	67,5	561305	118,20	561405	166,60
2,5"	81,5	60,5	63,5	82,5	561306	154,90	561406	210,20
3"	94	72,1	76,1	95	561307	208,60	561407	281,40
4"	132,5	97,6	101,6	133,5	561308	261,70	561408	352,20

Similar to DIN 11852

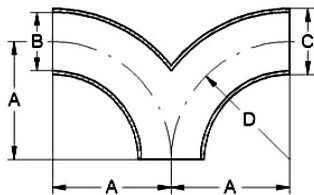
Y-bend DIN



DN	A	B	C	D	AISI304		AISI316L-1.4404	
15	34	16	19	35	534931	75,70	535031	97,40
20	39	20	23	40	534932	76,90	539532	143,90
25	49	26	29	50	539433	78,80	539533	88,60
32	54	32	35	55	539434	88,40	539534	95,50
40	59	38	41	60	539435	89,70	539535	110,40
50	69	50	53	70	539436	106,50	539536	126,20
65	80	66	70	80	534937	129,10	535037	149,20
80	90	81	85	90	534938	165,30	535038	241,80
100	100	100	104	100	534939	221,80	535039	252,60
125	186,5	125	129	187,5	534941	Enquiry	535041	Enquiry
150	224	150	154	225	534942	Enquiry	535042	Enquiry

Similar to DIN 11852

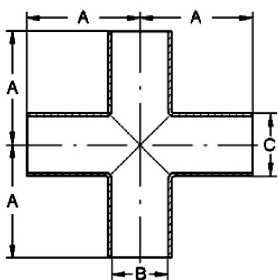
Y-bend inch



DN	A	B	C	D	AISI304		AISI316L-1.4404	
1"	26,5	22,9	25,4	27,5	561503	87,30	561603	111,70
1,5"	44	35,1	38,1	45	561504	100,40	561604	133,80
2"	66,5	47,8	50,8	67,5	561505	120,50	561605	149,90
2,5"	81,5	60,5	63,5	82,5	561506	153,90	561606	192,80
3"	94	72,1	76,1	95	561507	216,50	561607	292,20
4"	132,5	97,6	101,6	133,5	561508	293,10	561608	368,40

Similar to DIN 11852

Cross piece DIN



DN	A	B	C	AISI304		AISI316L-1.4404	
15	35	16	19	560131	65,80	560231	101,40
20	40	20	23	560132	66,90	560232	102,60
25	50	26	29	560133	59,50	560233	91,10
32	55	32	35	560134	69,60	560234	96,20
40	60	38	41	560135	72,40	560235	110,30
50	70	50	53	560136	74,30	560236	119,20
65	80	66	70	536537	84,40	536637	197,80
80	90	81	85	536538	102,20	536638	222,70

Similar to DIN 11852

LINNEMANN

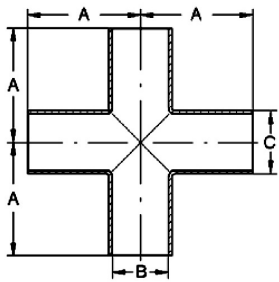
Rohrverbindungen • Edelstahlarmaturen
Pipe connections • Stainless steel fittings

LINNEMANN GmbH • Heerweg 14-16
72070 Tübingen / Germany

Fon: +49 (0) 7071 97555-0
Fax: +49 (0) 7071 97555-10

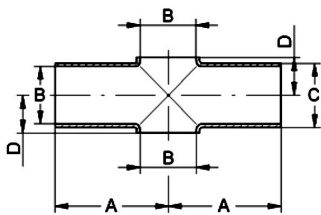
E-Mail: info@linnemann-online.com
Internet: www.linnemann-online.com

Fittings for welding DIN 11852	Art.No	EUR	Art.No	EUR
---------------------------------------	---------------	------------	---------------	------------

Cross piece DIN


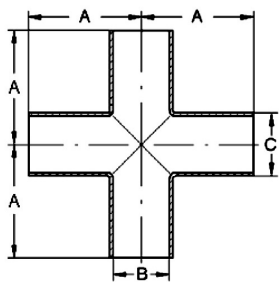
DN	A	B	C			AISI304		AISI316L-1.4404	
100	100	100	104			536539	126,20	536639	236,20
125	187,5	125	129			536541	375,70	536641	Enquiry
150	225	150	154			536542	503,30	536642	Enquiry
200	300	200	204			536544	Enquiry	536644	Enquiry

Similar to DIN 11852

Cross piece DIN, short


DN	A	B	C	D		AISI304		AISI316L-1.4404	
15	35	16	19	11		560331	39,30	560431	55,70
20	40	20	23	13		560332	40,50	560432	59,60
25	50	26	29	16,5		560333	36,90	560433	48,20
32	55	32	35	19		560334	41,10	560434	54,60
40	60	38	41	22,5		560335	43,10	560435	58,20
50	70	50	53	29,5		560336	45,60	560436	59,90
65	80	66	70	40		536737	55,80	536837	77,40
80	90	81	85	45,5		536738	76,90	536838	95,50
100	100	100	104	58		536739	96,50	536839	117,60
125	187,5	125	129	71,5		536741	259,20	536841	297,90
150	225	150	154	87		536742	324,40	536842	378,80
200	300	200	204	112		536744	Enquiry	536844	Enquiry

Similar to DIN 11852

Cross piece inch


DN	A	B	C			AISI304		AISI316L-1.4404	
1"	50	22,9	25,4			561903	61,80	562003	94,10
1,5"	60	35,1	38,1			561904	74,10	562004	104,20
2"	70	47,8	50,8			561905	77,90	562005	123,60
2,5"	80	60,5	63,5			561906	97,40	562006	179,30
3"	90	72,1	76,1			561907	121,80	562007	210,80
4"	100	97,6	101,6			561908	160,90	562008	263,40

Similar to DIN 11852